



Dosing and Administration Guide

Information for use in infants, children, and adults with primary hyperoxaluria type 1 (PH1)¹

INDICATION

OXLUMO[®] (lumasiran) is indicated for the treatment of primary hyperoxaluria type 1 (PH1) to lower urinary and plasma oxalate levels in children and adults.

IMPORTANT SAFETY INFORMATION

Adverse Reactions

The most common ($\geq 20\%$) adverse reaction reported in patients treated with OXLUMO was injection site reaction. Injection site reactions included erythema, swelling, pain, hematoma, pruritus, and discoloration.

Please see [Important Safety Information](#) on page 7 and accompanying full [Prescribing Information](#).

OXLUMO[®] (lumasiran) is the first FDA-approved treatment for PH1¹

For patients with primary hyperoxaluria type 1 (PH1), OXLUMO acts at the source of oxalate overproduction in the liver.¹

- OXLUMO is a double-stranded small interfering ribonucleic acid (siRNA) that harnesses a natural process called RNA interference (RNAi)
- OXLUMO is designed to act upstream of the metabolic defect in PH1 to reduce production of oxalate



Learn more about OXLUMO at OXLUMOHCP.com.



IMPORTANT SAFETY INFORMATION

Adverse Reactions

The most common ($\geq 20\%$) adverse reaction reported in patients treated with OXLUMO was injection site reaction. Injection site reactions included erythema, swelling, pain, hematoma, pruritus, and discoloration.

Please see [Important Safety Information](#) on page 7 and accompanying full [Prescribing Information](#).











 **OXLUMO[®]**
(lumasiran) for injection
94.5 mg/0.5 mL







Dosing information¹







OXLUMO[®] (lumasiran) is administered via subcutaneous injection by a healthcare professional, based on actual body weight.

WEIGHT-BASED DOSING IN 2 PHASES

The first 4 doses of OXLUMO are comprised of 3 monthly starting doses followed by the first ongoing dose, administered one month after the last starting dose.

Body weight <10 kg	STARTING DOSES			ONGOING DOSING						
	6 mg/kg monthly			3 mg/kg monthly						
	Month 1	Month 2	Month 3	Month 4	Month 5	Month 6	Month 7	Month 8	Month 9	Month 10
										

Body weight ≥10 kg to <20 kg	STARTING DOSES			ONGOING DOSING						
	6 mg/kg monthly			6 mg/kg every 3 months (quarterly)						
	Month 1	Month 2	Month 3	Month 4	Month 5	Month 6	Month 7	Month 8	Month 9	Month 10
										

Body weight ≥20 kg	STARTING DOSES			ONGOING DOSING						
	3 mg/kg monthly			3 mg/kg every 3 months (quarterly)						
	Month 1	Month 2	Month 3	Month 4	Month 5	Month 6	Month 7	Month 8	Month 9	Month 10
										

No dose adjustment is necessary in patients with renal impairment, including patients with kidney failure treated with hemodialysis. OXLUMO has not been studied in patients on peritoneal dialysis.

For patients on hemodialysis, administer OXLUMO following hemodialysis if administered on dialysis days.

DELAYED OR MISSED DOSE?

Administer treatment as soon as possible. Resume prescribed monthly or quarterly dosing from the most recently administered dose.

IMPORTANT SAFETY INFORMATION

Adverse Reactions

The most common (≥20%) adverse reaction reported in patients treated with OXLUMO was injection site reaction. Injection site reactions included erythema, swelling, pain, hematoma, pruritus, and discoloration.

Please see [Important Safety Information](#) on page 7 and accompanying full [Prescribing Information](#).



Preparation^{1,2}

OXLUMO® (lumasiran) is supplied as a 94.5 mg/0.5 mL solution in a single-use vial.

CALCULATING THE DOSE VOLUME

$$\text{PATIENT WEIGHT (kg)*} \times \text{DOSAGE (mg/kg)} \times 0.5 \text{ mL} \div 94.5 \text{ mg} = \text{mL of OXLUMO to administer}$$

[Click to see dose ranges.](#)

*1 kg is equivalent to 2.2 lbs.

GATHERING SUPPLIES



OXLUMO
189 mg/mL (94.5 mg/0.5 mL vial)



Sterile syringe(s)
0.3 mL, 1 mL, or 3 mL



Needle(s)
25G-31G and 18G (if needed)

The maximum acceptable single injection volume is 1.5 mL. Doses requiring more than 1.5 mL should be divided equally and administered as multiple injections. The injection sites should be at least 2 cm apart from previous injection locations.

Patient Weight (kg)	Total Dose Volume (mL)	Injection(s)	Vial(s) [†]	Needle(s)
<10 kg	Up to 0.3 mL	1 injection in a 0.3 mL syringe ^{‡, §}	1 vial	Withdrawal and injection: 25G–31G
≥10 kg to <20 kg	0.3–0.6 mL	1 injection in a 1 mL syringe	1–2 vials	Withdrawal: 18G Injection: 25G–31G
≥20 kg	0.3 mL and higher	1 injection in a 1 mL or 3 mL syringe	1 or more vials	Withdrawal: 18G Injection: 25G–31G

[†]If the dose is more than 0.5 mL, more than one vial will be needed.

[‡]For volumes requiring 1 mL syringe or smaller, dose should be rounded to the nearest 0.01 mL.

[§]For volumes less than 0.3 mL, a sterile 0.3-mL syringe is recommended. If using a 0.3-mL (30-unit) insulin syringe, 1-unit markings indicate 0.01 mL.

Using aseptic technique:

- 1. Withdraw** the total dose volume, holding OXLUMO vial upright or tilted to ensure beveled edge is up. **Repeat** with additional vials if needed.
- 2.** Pointing the needle and syringe straight up, **tap** the syringe to move any bubbles to the top, then **gently push** the plunger to force the bubbles out of the syringe, ensuring the correct volume of OXLUMO is still present.
- 3. Avoid** having OXLUMO on the needle tip before the needle is in the subcutaneous space. Consider **changing the needle** prior to administration, if possible. In clinical trials, a needle between 25 G and 31 G with 1/2" or 5/8" length was used for injection.

IMPORTANT SAFETY INFORMATION

Adverse Reactions

The most common (≥20%) adverse reaction reported in patients treated with OXLUMO was injection site reaction. Injection site reactions included erythema, swelling, pain, hematoma, pruritus, and discoloration.

Please see [Important Safety Information](#) on page 7 and accompanying full [Prescribing Information](#).

 **OXLUMO**
(lumasiran) for injection
94.5 mg/0.5 mL

Administration^{1,2}

OXLUMO® (lumasiran) should be injected subcutaneously into the abdomen, side or back of the upper arms, or thighs on a rotating basis. Each dose should be administered by a healthcare professional.

ADMINISTERING THE DOSE

1. Clean the area prior to injection. With your free hand, **pinch** the skin at injection site.

Insert the needle at a right angle* (90 degrees) to deliver the injection just below the skin on either the abdomen, side or back of the upper arms, or thighs.



2. Once the needle is inserted, **release** the pinched skin.

Administer the dose in a slow and steady manner.

Then, **count** for at least 5 seconds before withdrawing the needle.



*In patients with little subcutaneous tissue or if the needle size is longer than 2.5 cm, the needle should be inserted at a 45-degree angle.

- For subsequent doses, **rotating the injection site** is recommended
- **If more than 1 injection is needed** for a single dose of OXLUMO, the injection sites should be at least 2 cm apart
- OXLUMO **should not be administered** into scar tissue, the area around the navel, or areas that are reddened, inflamed, or swollen

HELP PATIENTS STAY ON TRACK

Have a detailed conversation with your patients about dose frequency. This can help them understand the importance of maintaining compliance with their treatment schedule.

IMPORTANT SAFETY INFORMATION

Adverse Reactions

The most common ($\geq 20\%$) adverse reaction reported in patients treated with OXLUMO was injection site reaction. Injection site reactions included erythema, swelling, pain, hematoma, pruritus, and discoloration.

Please see [Important Safety Information on page 7](#) and accompanying full [Prescribing Information](#).

 **OXLUMO**[®]
(lumasiran) for injection
94.5 mg/0.5 mL

Storage and handling^{1,2}

OXLUMO® (lumasiran) is a clear, colorless-to-yellow solution available in single-use vials of 94.5 mg / 0.5 mL in cartons containing one vial.



Vials should be kept in a dry place. Store vials at 36 °F to 77 °F (2 °C to 25 °C).



Store OXLUMO in its original container until ready for use.



Any unused medicine or waste material should be disposed of in accordance with local requirements.

CARTON
WITH 1 VIAL



IMPORTANT SAFETY INFORMATION

Pregnancy and Lactation

No data are available on the use of OXLUMO in pregnant women. No data are available on the presence of OXLUMO in human milk or its effects on breastfed infants or milk production. Consider the developmental and health benefits of breastfeeding along with the mother's clinical need for OXLUMO and any potential adverse effects on the breastfed child from OXLUMO or the underlying maternal condition.

Please see [Important Safety Information](#) on page 7 and accompanying full [Prescribing Information](#).

 **OXLUMO®**
(lumasiran) for injection
94.5 mg/0.5 mL



Indication and Important Safety Information

INDICATION

OXLUMO® (lumasiran) is indicated for the treatment of primary hyperoxaluria type 1 (PH1) to lower urinary and plasma oxalate levels in children and adults.

IMPORTANT SAFETY INFORMATION

Adverse Reactions

The most common ($\geq 20\%$) adverse reaction reported in patients treated with OXLUMO was injection site reaction. Injection site reactions included erythema, swelling, pain, hematoma, pruritus, and discoloration.

Pregnancy and Lactation

No data are available on the use of OXLUMO in pregnant women. No data are available on the presence of OXLUMO in human milk or its effects on breastfed infants or milk production. Consider the developmental and health benefits of breastfeeding along with the mother's clinical need for OXLUMO and any potential adverse effects on the breastfed child from OXLUMO or the underlying maternal condition.

For additional information about OXLUMO, please see the accompanying full [Prescribing Information](#).

References:

1. OXLUMO [package insert]. Cambridge, MA: Alnylam Pharmaceuticals, Inc.
2. Data on File. Alnylam Pharmaceuticals, Inc.

For pediatric and adult patients with PH1

Help patients stay consistent with their PH1 treatment plan¹

The dosing regimen of OXLUMO[®] (lumasiran) is designed to help reduce urinary and plasma oxalate levels.¹

- OXLUMO is a **subcutaneous injection** supplied in a single-use vial for administration by a healthcare professional
- OXLUMO dosing is based on **actual body weight**
- After **3 monthly starting doses**,
 - Patients ≥ 10 kg receive ongoing doses once **every 3 months**
 - Patients < 10 kg receive ongoing **monthly doses**



Visit [OXLUMOHCP.com](https://www.oxlumo.com/hcp) for more information.



For medical information:

CALL: 877-ALNYLAM (877.256.9526) / EMAIL: medinfo@alnylam.com

INDICATION

OXLUMO is indicated for the treatment of primary hyperoxaluria type 1 (PH1) to lower urinary and plasma oxalate levels in children and adults.

IMPORTANT SAFETY INFORMATION

Adverse Reactions

The most common ($\geq 20\%$) adverse reaction reported in patients treated with OXLUMO was injection site reaction. Injection site reactions included erythema, swelling, pain, hematoma, pruritus, and discoloration.

Please see additional [Important Safety Information](#) on page 7 and accompanying full [Prescribing Information](#).

Representative dosing table^{1,2}

The following chart contains several illustrative dosing calculations. These examples are not intended to replace your clinical judgment. Confirm all calculations prior to administration of OXLUMO® (lumasiran).

Weight Category	Actual Patient Body Weight	OXLUMO Starting Dose	Starting Dose Total Dose Volume*	OXLUMO Ongoing Dose	Ongoing Dose Total Dose Volume*	Ongoing Dose Frequency	Vial(s)	Injection(s) ^{†‡}
<10 kg	2.5 kg	6 mg/kg	0.1 mL	3 mg/kg	0.04 mL	MONTHLY	1	1 injection in a 0.3-mL syringe
	5 kg		0.2 mL		0.1 mL			
	7.5 kg							
≥10 kg to <20 kg	10 kg	6 mg/kg	0.3 mL	6 mg/kg	0.3 mL	QUARTERLY	1	1 injection in a 1-mL syringe
	12.5 kg		0.4 mL		0.4 mL			
	15 kg		0.5 mL		0.5 mL			
	17.5 kg		0.6 mL		0.6 mL			
≥20 kg	20 kg	3 mg/kg	0.3 mL	3 mg/kg	0.3 mL	QUARTERLY	1	1 injection in a 1-mL syringe
	30 kg		0.5 mL		0.5 mL			
	40 kg		0.6 mL		0.6 mL		2	1 injection in a 1-mL syringe
	50 kg		0.8 mL		0.8 mL			
	60 kg		1.0 mL		1.0 mL		3	1 injection in a 3-mL syringe
	70 kg		1.1 mL		1.1 mL			
	80 kg		1.3 mL		1.3 mL		4	2 injections: 1) 0.8 mL in a 1-mL syringe 2) 0.8 mL in a 1-mL syringe
	90 kg		1.4 mL		1.4 mL			
	100 kg		1.6 mL		1.6 mL		4	2 injections: 1) 0.9 mL in a 1-mL syringe 2) 0.9 mL in a 1-mL syringe
	110 kg		1.8 mL		1.8 mL			
For patients >110 kg, please see calculation on pages 3-4.								

*For volumes requiring 1 mL syringe or smaller, dose should be rounded to the nearest 0.01 mL. †Divide dose volumes >1.5 mL equally into multiple syringes. ‡For volumes less than 0.3 mL, a sterile 0.3-mL syringe is recommended. If using a 0.3-mL (30-unit) insulin syringe, 1-unit markings indicate 0.01 mL.

To determine the dose and supplies needed for your patients, fill in the boxes below using information from the table above.								
Weight Category (kg) [§]	Weight (kg)	Starting Dose (mg/kg)	Starting Dose Volume (mL)	Ongoing Dose (mg/kg)	Ongoing Dose Volume (mL)	Ongoing Dose Frequency	Vial(s)	Injection(s)

[§]For weight ranges, please refer to [page 3](#).

Please see [Important Safety Information](#) on page 7 and accompanying full [Prescribing Information](#).

HIGHLIGHTS OF PRESCRIBING INFORMATION

These highlights do not include all the information needed to use OXLUMO® safely and effectively. See full prescribing information for OXLUMO.

OXLUMO (lumasiran) injection, for subcutaneous use
Initial U.S. Approval: 2020

----- **INDICATIONS AND USAGE** -----

OXLUMO is a *HAOI*-directed small interfering ribonucleic acid (siRNA) indicated for the treatment of primary hyperoxaluria type 1 (PH1) to lower urinary and plasma oxalate levels in pediatric and adult patients. (1)

----- **DOSAGE AND ADMINISTRATION** -----

- The recommended dose of OXLUMO by subcutaneous injection is based on body weight. (2.1)

Body Weight	Loading Dose	Maintenance Dose
less than 10 kg	6 mg/kg once monthly for 3 doses	3 mg/kg once monthly, beginning 1 month after the last loading dose
10 kg to less than 20 kg	6 mg/kg once monthly for 3 doses	6 mg/kg once every 3 months (quarterly), beginning 1 month after the last loading dose
20 kg and above	3 mg/kg once monthly for 3 doses	3 mg/kg once every 3 months (quarterly), beginning 1 month after the last loading dose

- See Full Prescribing Information for important preparation and administration instructions. (2.2)

DOSAGE FORMS AND STRENGTHS

- Injection: 94.5 mg/0.5 mL in a single-dose vial. (3)

----- **CONTRAINDICATIONS** -----

- None. (4)

----- **ADVERSE REACTIONS** -----

The most common adverse reaction (reported in ≥20% of patients) is injection site reactions. (6.1)

To report SUSPECTED ADVERSE REACTIONS, contact Alnylam Pharmaceuticals at 1-877-256-9526 or FDA at 1-800-FDA-1088 or www.fda.gov/medwatch.

Revised: 4/2025

FULL PRESCRIBING INFORMATION: CONTENTS*

- 1 INDICATIONS AND USAGE**
- 2 DOSAGE AND ADMINISTRATION**
 - 2.1 Recommended Dosage
 - 2.2 Administration Instructions
- 3 DOSAGE FORMS AND STRENGTHS**
- 4 CONTRAINDICATIONS**
- 6 ADVERSE REACTIONS**
 - 6.1 Clinical Trials Experience
 - 6.2 Postmarketing Experience
- 8 USE IN SPECIFIC POPULATIONS**
 - 8.1 Pregnancy
 - 8.2 Lactation
 - 8.4 Pediatric Use
 - 8.5 Geriatric Use
 - 8.6 Hepatic Impairment
 - 8.7 Renal Impairment

- 11 DESCRIPTION**
- 12 CLINICAL PHARMACOLOGY**
 - 12.1 Mechanism of Action
 - 12.2 Pharmacodynamics
 - 12.3 Pharmacokinetics
 - 12.6 Immunogenicity
- 13 NONCLINICAL TOXICOLOGY**
 - 13.1 Carcinogenesis, Mutagenesis, Impairment of Fertility
- 14 CLINICAL STUDIES**
 - 14.1 ILLUMINATE-A
 - 14.2 ILLUMINATE-B
 - 14.3 ILLUMINATE-C
- 16 HOW SUPPLIED/STORAGE AND HANDLING**
 - 16.1 How Supplied
 - 16.2 Storage and Handling

*Sections or subsections omitted from the full prescribing information are not listed.

FULL PRESCRIBING INFORMATION

1 INDICATIONS AND USAGE

OXLUMO is indicated for the treatment of primary hyperoxaluria type 1 (PH1) to lower urinary and plasma oxalate levels in pediatric and adult patients [see *Clinical Pharmacology (12.1)*, *Clinical Studies (14.1, 14.2, 14.3)*].

2 DOSAGE AND ADMINISTRATION

2.1 Recommended Dosage

The recommended dosing regimen of OXLUMO consists of loading doses (monthly for 3 doses) followed by maintenance doses (beginning 1 month after the last loading dose) administered subcutaneously as shown in Table 1.

Dosing is based on actual body weight.

Table 1. OXLUMO Weight-Based Dosing Regimen

Body Weight	Loading Dose	Maintenance Dose
Less than 10 kg	6 mg/kg once monthly for 3 doses	3 mg/kg once monthly, beginning 1 month after the last loading dose
10 kg to less than 20 kg	6 mg/kg once monthly for 3 doses	6 mg/kg once every 3 months (quarterly), beginning 1 month after the last loading dose
20 kg and above	3 mg/kg once monthly for 3 doses	3 mg/kg once every 3 months (quarterly), beginning 1 month after the last loading dose

For Patients on Hemodialysis

Administer OXLUMO after hemodialysis if administered on dialysis days.

Missed Dose

If a dose is delayed or missed, administer OXLUMO as soon as possible. Resume prescribed monthly or quarterly dosing, from the most recently administered dose.

2.2 Administration Instructions

OXLUMO is intended for subcutaneous use and should be administered by a healthcare professional.

Visually inspect the drug product solution. Do not use if it contains particulate matter or if it is cloudy or discolored. OXLUMO is a sterile, preservative-free, clear, colorless-to-yellow solution. It is supplied in a single-dose vial, as a ready-to-use solution that does not require additional reconstitution or dilution prior to administration.

- Use aseptic technique.
- Divide injection volumes greater than 1.5 mL equally into multiple syringes.
- For volumes less than 0.3 mL, a sterile 0.3-mL syringe is recommended. If using a 0.3 mL (30 unit) insulin syringe, 1-unit markings indicate 0.01 mL.

- Administer subcutaneous injection into the abdomen, thigh, or the side or back of the upper arms. Rotate injection sites. Do not inject into scar tissue or areas that are reddened, inflamed, or swollen.
 - If injecting into the abdomen, avoid the area around the navel.
 - If more than one injection is needed for a single dose of OXLUMO, the injection sites should be at least 2 cm apart.
- Discard unused portion of the drug.

3 DOSAGE FORMS AND STRENGTHS

Injection: 94.5 mg/0.5 mL clear, colorless-to-yellow solution in a single-dose vial.

4 CONTRAINDICATIONS

None.

6 ADVERSE REACTIONS

6.1 Clinical Trials Experience

Because clinical trials are conducted under widely varying conditions, adverse reaction rates observed in the clinical trials of a drug cannot be directly compared to rates in the clinical trials of another drug and may not reflect the rates observed in practice.

The safety of OXLUMO has been evaluated in a placebo-controlled trial and two single-arm clinical trials. Across these trials, 98 patients with PH1 have been treated with OXLUMO, including 71 pediatric patients and 15 patients on hemodialysis. Overall, 92 patients were treated for at least 6 months, 78 patients for at least 12 months, and 29 patients for at least 24 months.

In the randomized, placebo-controlled, double-blind study ILLUMINATE-A in pediatric and adult patients with PH1 aged 6 to 61 years, 26 patients received OXLUMO, and 13 patients received placebo. Of these, 25 patients received ≥ 5 months of treatment.

In two single-arm studies in patients with PH1, ILLUMINATE-B (patients < 6 years of age) and ILLUMINATE-C (pediatric and adult patients with moderately or severely reduced GFR [eGFR ≤ 45 mL/min/1.73 m² or pediatric patients < 12 months of age with serum creatinine above the upper limit of normal for age] and patients with kidney failure on hemodialysis), the OXLUMO safety profile was similar to that seen in ILLUMINATE-A [see *Clinical Studies (14)*].

In placebo-controlled and open-label clinical studies the most common adverse reaction reported was injection site reaction. Injection site reactions included erythema, swelling, pain, hematoma, pruritus, and discoloration. These symptoms were generally mild and resolved within one day of the injection and did not lead to discontinuation of treatment.

Table 2. Adverse Reactions Reported in at Least 10% of Patients Treated with OXLUMO and that Occurred at Least 5% More Frequently than in Patients Treated with Placebo in ILLUMINATE-A during the 6-Month Double-Blind Period

Adverse Reaction	OXLUMO N=26 N (%)	Placebo N=13 N (%)
Injection site reaction	10 (38)	0 (0)

Abdominal pain*	4 (15)	1 (8)
*Grouped term includes abdominal pain, abdominal pain upper, abdominal pain lower, and abdominal discomfort.		

6.2 Postmarketing Experience

The following additional adverse reaction has been reported during post-approval use. Because these events are reported voluntarily from a population of uncertain size, it is generally not possible to reliably estimate their frequency.

Immune system disorder: Hypersensitivity

8 USE IN SPECIFIC POPULATIONS

8.1 Pregnancy

Risk Summary

There are no available data with the use of OXLUMO in pregnant women to evaluate a drug-associated risk of major birth defects, miscarriage, or adverse maternal or fetal outcomes.

No adverse effects on pregnancy or embryo-fetal development related to OXLUMO were observed in rats at 45 times and in rabbits at 90 times the maximum recommended human dose in women (see *Data*).

The estimated background risk of major birth defects and miscarriage in the indicated population is unknown. All pregnancies have a background risk of birth defect, loss, or other adverse outcomes. In the U.S. general population, the estimated background risk of major birth defects and miscarriage in clinically recognized pregnancies is 2% to 4% and 15% to 20%, respectively.

Data

Animal Data

In an embryo-fetal development study in pregnant rats, lumasiran was administered subcutaneously at doses of 3, 10, and 30 mg/kg/day during organogenesis (gestational days 6-17). Administration of lumasiran resulted in no effects on embryo-fetal survival or fetal body weights and no lumasiran-related fetal malformations were observed. The 30 mg/kg/day dose in rats is 45 times the maximum recommended human dose (MRHD) for women of 3 mg/kg/month normalized to 0.1 mg/kg/day, based on body surface area. In an embryo-fetal development study in female rabbits, lumasiran was administered subcutaneously at doses of 3, 10, and 30 mg/kg/day during organogenesis (gestational days 7-19). There were decreases in maternal food consumption and decreases in maternal body weight gains at doses ≥ 3 mg/kg/day. There were no lumasiran-related fetal findings identified at doses up to 30 mg/kg/day (90 times the normalized MRHD based on body surface area).

In a postnatal development study, lumasiran administered subcutaneously to pregnant female rats on gestational days 7, 13, 19 and on lactation days 6, 12, and 18 through weaning at doses up to 50 mg/kg did not produce maternal toxicity or developmental effects in the offspring.

8.2 Lactation

Risk Summary

There are no data on the presence of OXLUMO in human milk, the effects on the breastfed child, or the effects of the drug on milk production. The developmental and health benefits of breastfeeding should be considered along with the mother's clinical need for OXLUMO and any potential adverse effects on the breastfed child from OXLUMO or from the underlying maternal condition.

8.4 Pediatric Use

The safety and effectiveness of OXLUMO have been established in pediatric patients aged birth and older. Use of OXLUMO in these age groups is supported by evidence from an adequate and well controlled study of OXLUMO in pediatric patients 6 years or older and adults with PH1 (ILLUMINATE-A), a single-arm clinical study in pediatric patients less than 6 years of age with PH1 (ILLUMINATE-B), and a single-arm clinical study in pediatric and adult patients with PH1 who had advanced chronic kidney disease including patients on hemodialysis (ILLUMINATE-C) [see *Adverse Reactions (6.1)*, *Clinical Studies (14)*].

8.5 Geriatric Use

Clinical studies of OXLUMO did not include sufficient numbers of patients aged 65 and over to determine whether they respond differently from younger patients.

8.6 Hepatic Impairment

No dose adjustment is recommended for patients with mild [total bilirubin > upper limit of normal (ULN) to $1.5 \times$ ULN or AST > ULN] or moderate hepatic impairment (total bilirubin > 1.5 to $3 \times$ ULN with any AST). OXLUMO has not been studied in patients with severe hepatic impairment (total bilirubin > $3 \times$ ULN with any AST) [see *Clinical Pharmacology (12.3)*].

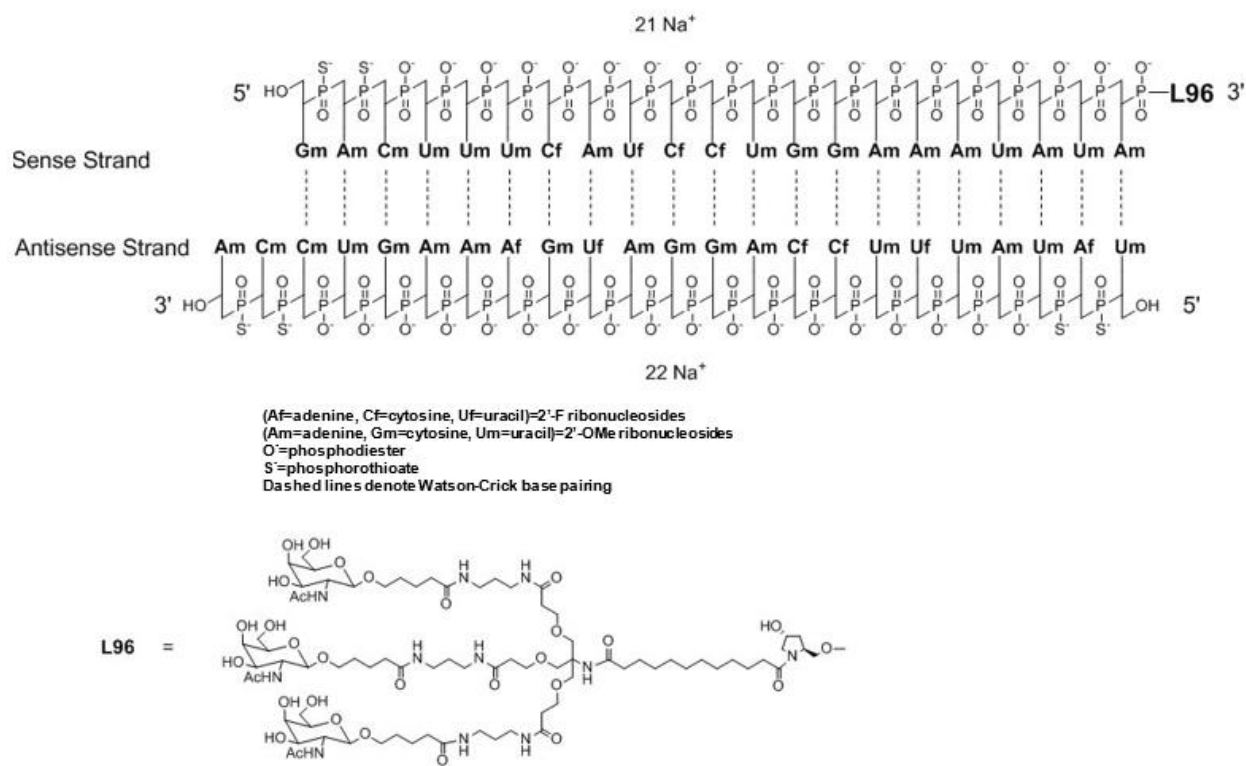
8.7 Renal Impairment

No dose adjustment is necessary in patients with renal impairment including patients with kidney failure treated with hemodialysis [see *Clinical Pharmacology (12.3)*]. OXLUMO has not been studied in patients on peritoneal dialysis.

11 DESCRIPTION

OXLUMO injection contains lumasiran, a *HAOI*-directed double-stranded small interfering ribonucleic acid (siRNA), covalently linked to a ligand containing *N*-acetylgalactosamine (GalNAc).

The structural formula of lumasiran sodium is presented below:



The molecular formula of lumasiran sodium is C₅₃₀H₆₆₉F₁₀N₁₇₃O₃₂₀P₄₃S₆Na₄₃ and the molecular weight is 17,286 Da.

OXLUMO is supplied as a sterile, preservative-free, clear, colorless-to-yellow solution for subcutaneous administration containing the equivalent of 94.5 mg of lumasiran (provided as lumasiran sodium) in 0.5 mL of water for injection and sodium hydroxide and/or phosphoric acid to adjust the pH to ~ 7.0.

12 CLINICAL PHARMACOLOGY

12.1 Mechanism of Action

Lumasiran reduces levels of glycolate oxidase (GO) enzyme by targeting the hydroxyacid oxidase 1 (*HAO1*) messenger ribonucleic acid (mRNA) in hepatocytes through RNA interference. Decreased GO enzyme levels reduce the amount of available glyoxylate, a substrate for oxalate production. As the GO enzyme is upstream of the deficient alanine: glyoxylate aminotransferase (AGT) enzyme that causes PH1, the mechanism of action of lumasiran is independent of the underlying *AGXT* gene mutation. OXLUMO is not expected to be effective in primary hyperoxaluria type 2 (PH2) or type 3 (PH3) because its mechanism of action does not affect the metabolic pathways causing hyperoxaluria in PH2 and PH3.

12.2 Pharmacodynamics

The pharmacodynamic effects of OXLUMO have been evaluated in adult and pediatric patients with PH1 across a range of doses and dosing frequency. Dose-dependent reductions in urinary oxalate levels were observed, resulting in the selection of the recommended body weight-based loading and maintenance dosing regimens. With the recommended dosing regimens, onset of effect was observed within two weeks after the first dose and

maximal reductions in urinary oxalate were observed by Month 2 and persisted with continued use of OXLUMO maintenance dosage [see Figures 1 and 2 in *Clinical Studies (14.1, 14.2)*].

Cardiac Electrophysiology

At the recommended dose, OXLUMO does not lead to clinically relevant QT interval prolongation.

12.3 Pharmacokinetics

The pharmacokinetic (PK) properties of OXLUMO were evaluated following administration of single and multiple dosages in patients with PH1 as summarized in Table 3.

Table 3. Pharmacokinetic Parameters of Lumasiran

		Lumasiran
General Information		
Steady-State Exposure	C_{max} [Median (Range)]	462 (38.5 to 1500) ng/mL
	AUC_{0-last} [Median (Range)]	6810 (2890 to 10700) ng·h/mL
Dose Proportionality		<ul style="list-style-type: none"> Lumasiran exhibited an approximately dose proportional increase in plasma exposure following single subcutaneous doses ranging from 0.3 to 6 mg/kg. Lumasiran exhibited time-independent pharmacokinetics with multiple doses of 1 and 3 mg/kg once monthly or 3 mg/kg quarterly.
Accumulation		<ul style="list-style-type: none"> No accumulation of lumasiran was observed in plasma after repeated monthly or quarterly dosing.
Absorption		
T_{max} [Median (Range)]		4 (0.5 to 12) hours
Distribution^a		
Estimated Vd/F		4.9 L
Protein Binding		85%
Elimination		
Apparent Half-Life [Mean (%CV)]		5.2 (47%) hours
Estimated CL/F		26.5 L/hour
Metabolism		
Primary Pathway		Lumasiran is metabolized by endo- and exonucleases to oligonucleotides of shorter lengths.
Excretion		
Primary Pathway		Less than 26% of the administered dose of lumasiran is excreted unchanged into the urine within 24 hours with the rest excreted as inactive metabolite.
^a Lumasiran distributes primarily to the liver after subcutaneous administration. C _{max} = maximum plasma concentration; AUC _{0-last} = area under the plasma concentration-time curve from time of administration (0) to the last measurable time point (last); T _{max} = time to maximum concentration; Vd/F = apparent volume of distribution; CV = coefficient of variation; CL/F = apparent clearance.		

Specific Populations

No clinically significant differences in the pharmacokinetics or pharmacodynamics of lumasiran were observed based on age (4 months to <65 years old), sex, race/ethnicity, renal impairment, use of hemodialysis, or mild to moderate hepatic impairment (total bilirubin ≤ ULN and AST > ULN; or total bilirubin ≤ 3× ULN). The effect of severe hepatic impairment on the pharmacokinetics of lumasiran is unknown.

Body Weight

In children <20 kg, lumasiran C_{max} was twice as high due to the higher 6 mg/kg dose and faster absorption rate. At the approved recommended dosage, lumasiran AUC was similar across the 6.2 kg to 110 kg body weight range [see *Dosage and Administration (2.1)*].

Drug Interaction Studies

Clinical Studies

No clinical studies evaluating the drug interaction potential of lumasiran have been conducted. Concomitant use of pyridoxine (vitamin B6) did not influence the pharmacodynamics or pharmacokinetics of lumasiran.

In Vitro Studies

In vitro studies indicate that lumasiran is not a substrate or an inhibitor of cytochrome P450 (CYP) enzymes. Lumasiran is not expected to induce CYP enzymes or modulate the activities of drug transporters.

12.6 Immunogenicity

The observed incidence of anti-drug antibody (ADA, including neutralizing antibody) is highly dependent on the sensitivity and specificity of the assay. Differences in assay methods preclude meaningful comparisons of the incidence of ADA in the studies described below with the incidence of ADA in other studies, including those of OXLUMO or of other siRNA products.

Across all clinical studies in the lumasiran development program, including patients with PH1 and healthy volunteers dosed with OXLUMO, 7 of 120 (6%) lumasiran-treated individuals with mean follow-up duration of 8.9 months, tested positive for ADA, as early as from Day 29.

No clinically significant differences in the safety, pharmacokinetic, or pharmacodynamic profiles of lumasiran were observed in patients who tested positive for ADA.

13 NONCLINICAL TOXICOLOGY

13.1 Carcinogenesis, Mutagenesis, Impairment of Fertility

Carcinogenicity studies were conducted in Tg-rasH2 mice and Sprague Dawley rats.

Lumasiran was not carcinogenic in transgenic Tg-rasH2 mice following monthly subcutaneous administration of lumasiran for 26 weeks at doses of 150, 500, or 1500 mg/kg.

In a 2-year carcinogenicity study, lumasiran was not carcinogenic up to the highest dose tested. Sprague Dawley rats were administered subcutaneous doses of 20, 55, or 110 mg/kg lumasiran once every 4 weeks (3, 9, or 18 times the normalized maintenance MRHD, based on body surface area).

Lumasiran was not genotoxic in an in vitro bacterial reverse mutation (Ames) assay, in the in vitro chromosomal aberration assay in cultured human peripheral blood lymphocytes, or the in vivo micronucleus assay in rats.

Administration of lumasiran by weekly subcutaneous doses of 0, 5, 15, and 50 mg/kg in male and female rats prior to and during mating and continuing in females once on Day 6 of presumed gestation resulted in no adverse effects upon the male or female fertility endpoints evaluated.

14 CLINICAL STUDIES

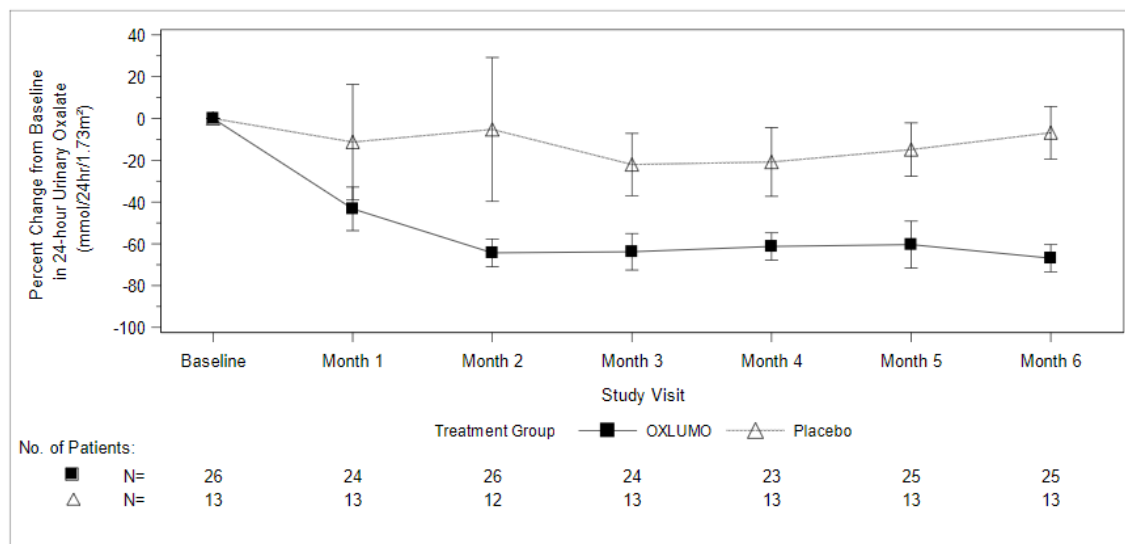
14.1 ILLUMINATE-A

ILLUMINATE-A was a randomized, double-blind trial comparing lumasiran and placebo in 39 patients 6 years of age and older with PH1 and an eGFR ≥ 30 mL/min/1.73 m² (ILLUMINATE-A; NCT03681184). Patients received 3 loading doses of 3 mg/kg OXLUMO (N=26) or placebo (N=13) administered once monthly, followed by quarterly maintenance doses of 3 mg/kg OXLUMO or placebo [see *Dosage and Administration (2.1)*]. After six months, all patients received OXLUMO.

The median age of patients at first dose was 15 years (range 6 to 61 years), 67% were male, and 77% were White. At baseline, the median 24-hour urinary oxalate excretion corrected for body surface area (BSA) was 1.7 mmol/24 h/1.73 m², the median plasma oxalate level was 13.1 μ mol/L, 33% of patients had eGFR ≥ 90 mL/min/1.73 m², 49% had eGFR of 60 to <90 mL/min/1.73 m², and 18% had eGFR 30 to <60 mL/min/1.73 m², 56% were on pyridoxine, and 85% reported a history of symptomatic kidney stone events.

The primary endpoint was the percent reduction from baseline in 24-hour urinary oxalate excretion corrected for BSA averaged over Months 3 through 6. The LS mean percent change from baseline in 24-hour urinary oxalate in the OXLUMO group was -65% (95% CI: -71, -59) compared with -12% (95% CI: -20, -4) in the placebo group, resulting in a between-group LS mean difference of 53% (95% CI: 45, 62; $p < 0.0001$) [Figure 1].

Figure 1. ILLUMINATE-A: Percent Change from Baseline in 24-hour Urinary Oxalate by Month



Abbreviation: CI = Confidence Interval.

Results are plotted as mean (95% CI) of percent change from baseline.

By Month 6, 52% (95% CI: 31, 72) of patients treated with OXLUMO achieved a normal 24-hour urinary oxalate corrected for BSA (≤ 0.514 mmol/24 hr/1.73 m²) compared to 0% (95% CI: 0, 25) placebo-treated patients ($p=0.001$). Reduced urinary oxalate levels were maintained through Month 24 in patients treated with OXLUMO.

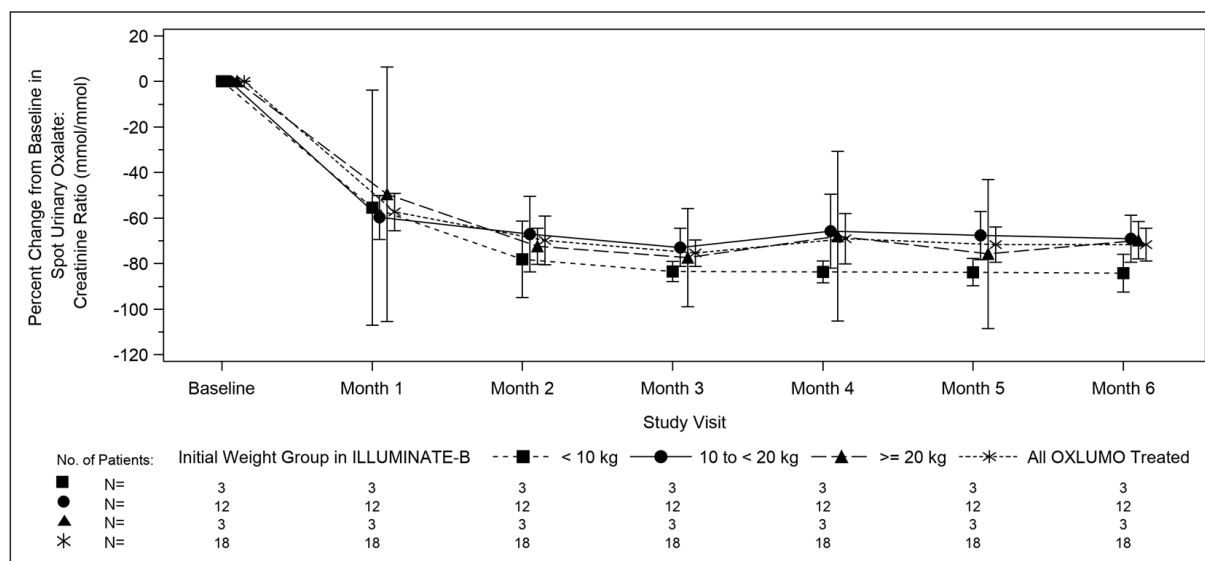
14.2 ILLUMINATE-B

ILLUMINATE-B was a single-arm study in 18 patients <6 years of age with PH1 and an eGFR >45 mL/min/1.73 m² for patients ≥ 12 months of age or a normal serum creatinine for patients <12 months of age (ILLUMINATE-B; NCT03905694). Dosing was based on body weight [see *Dosage and Administration (2.1)*].

The median age of patients at first dose was 51 months (range 4 to 74 months), 56% were female, and 88% were White. Three patients were less than 10 kg, 12 were 10 kg to <20 kg, and 3 were \geq 20 kg. The median spot urinary oxalate: creatinine ratio at baseline was 0.47 mmol/mmol.

The primary endpoint was the percent reduction from baseline in spot urinary oxalate: creatinine ratio averaged over Months 3 through 6. Patients treated with OXLUMO achieved a reduction in spot urinary oxalate: creatinine ratio from baseline of 72% (95% CI: 66, 78) (Figure 2). The reduction in urinary oxalate excretion was maintained with continued OXLUMO treatment through Month 12.

Figure 2. ILLUMINATE-B: Percent Change from Baseline in Spot Urinary Oxalate: Creatinine Ratio by Month



Abbreviation: CI = Confidence Interval.

Results are plotted as mean (95% CI) of percent change from baseline.

14.3 ILLUMINATE-C

A total of 21 patients were enrolled and treated with OXLUMO in a multi-center, single-arm study in patients with PH1 and an eGFR \leq 45 mL/min/1.73 m² in patients 12 months of age and older or an elevated serum creatinine for age in patients less than 12 months of age, including patients on hemodialysis. ILLUMINATE-C included 2 cohorts. Cohort A included 6 patients who did not require dialysis at the time of study enrollment. Cohort B included 15 patients who were on a stable regimen of hemodialysis; the hemodialysis regimen was to remain stable in these patients for the first 6 months of the study. Patients received the recommended dosing regimen of OXLUMO based on body weight [see *Dosage and Administration (2.1)*]. Patients requiring peritoneal dialysis were excluded.

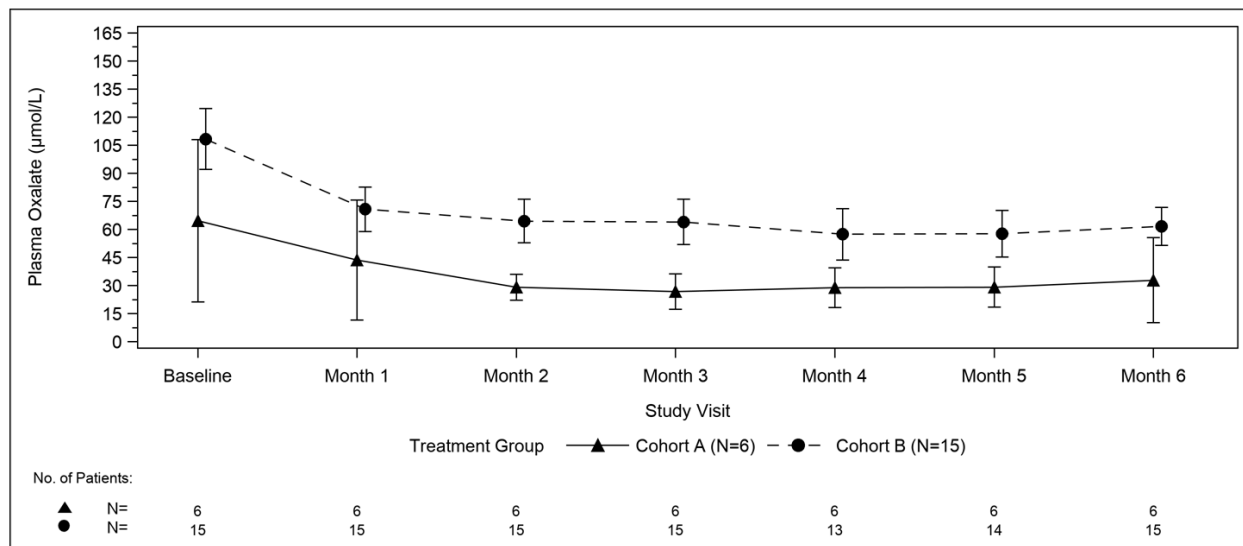
The median age of patients at first dose was 9 years (range 0 to 59 years), 57% were male, and 76% were White. For Cohort A, the median plasma oxalate level was 58 μ mol/L. For Cohort B, the median pre-dialysis plasma oxalate level was 104 μ mol/L.

The primary endpoint was the percent change in plasma oxalate from baseline to Month 6 (average from Month 3 to Month 6) for Cohort A (N=6) and the percent change in pre-dialysis plasma oxalate from baseline to Month 6 (average from Month 3 to Month 6) for Cohort B (N=15). The percent change from baseline to

Month 6 in plasma oxalate levels in Cohort A was an LS mean difference of -33% (95% CI: -82, 15) and in Cohort B was -42% (95% CI: -51, -34).

Mean plasma oxalate decreased from 65 $\mu\text{mol/L}$ (95% CI: 21, 108) at baseline to 33 $\mu\text{mol/L}$ (95% CI: 10, 56) at Month 6 in Cohort A, and from 108 $\mu\text{mol/L}$ (95% CI: 92, 125) at baseline to 62 $\mu\text{mol/L}$ (95% CI: 51, 72) at Month 6 in Cohort B. The time course for changes in plasma oxalate is shown in Figure 3.

Figure 3. ILLUMINATE-C: Plasma Oxalate Levels ($\mu\text{mol/L}$) during the Primary Analysis Period by Month



Abbreviation: CI = Confidence Interval.

Results are plotted as mean (95% CI) of actual values.

For Cohort A, the baseline is defined as the mean of all plasma oxalate samples collected prior to the first dose of lumasiran; for Cohort B, the baseline is defined as the last four pre-dialysis plasma oxalate samples collected prior to the first dose of lumasiran. In Cohort B, only pre-dialysis samples are utilized.

16 HOW SUPPLIED/STORAGE AND HANDLING

16.1 How Supplied

OXLUMO is a clear, colorless-to-yellow solution available in single-dose vials of 94.5 mg/0.5 mL in cartons containing one vial (NDC 71336-1002-1).

16.2 Storage and Handling

Store at 2°C to 25°C [36°F to 77°F].

Store OXLUMO in its original container until ready for use.